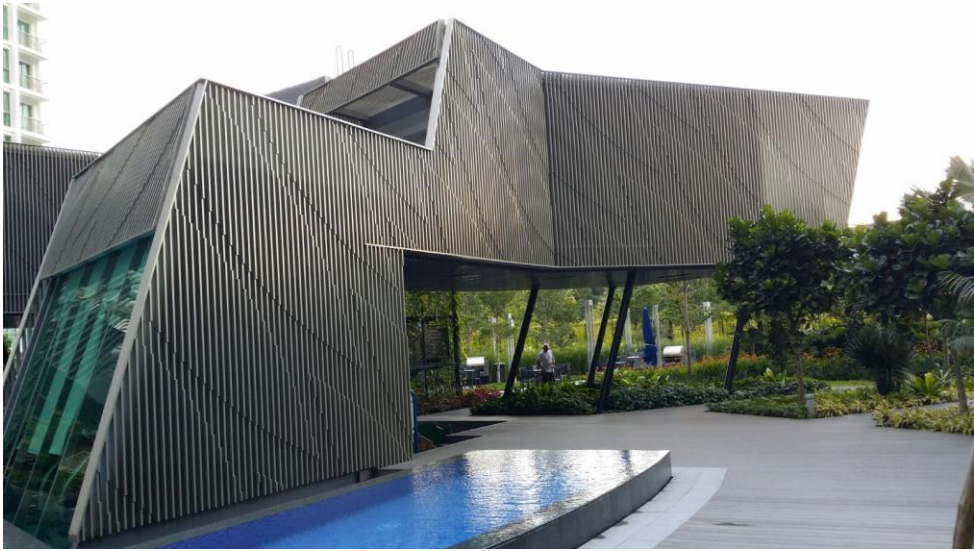


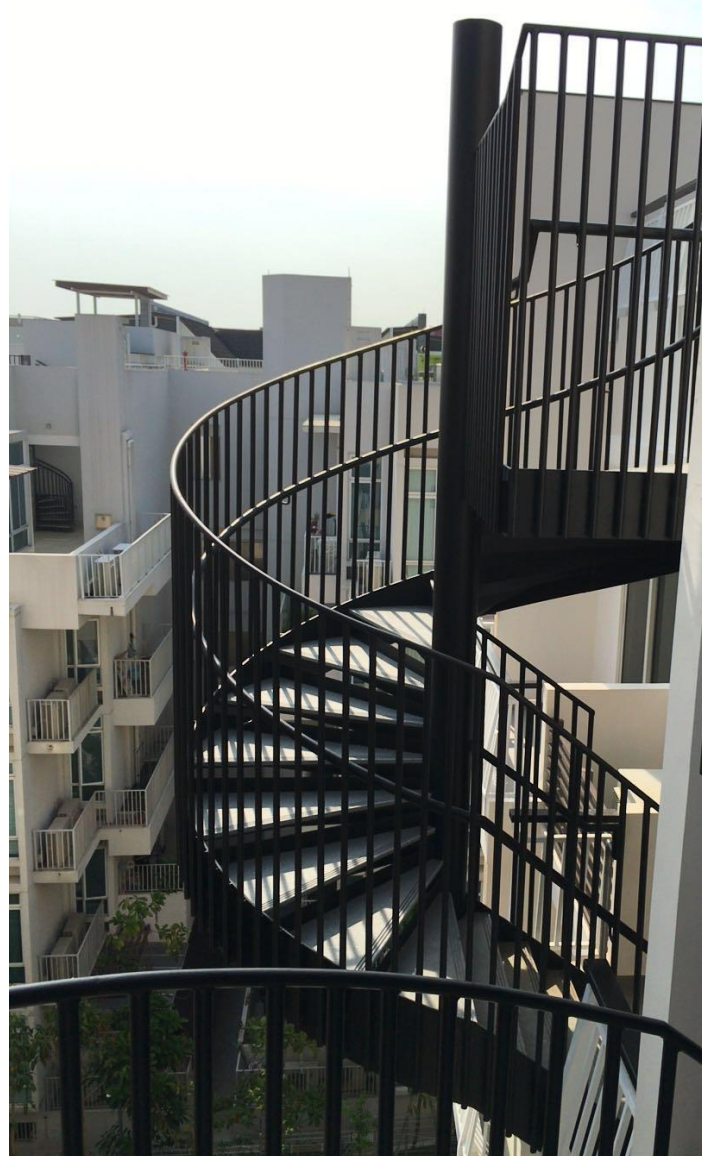
PROJECT NAME: RIPPLE BAY CONDOMINIUM
MAIN CONTRACTOR: LUM CHANG BUILDING CONTRACTORS PTE LTD



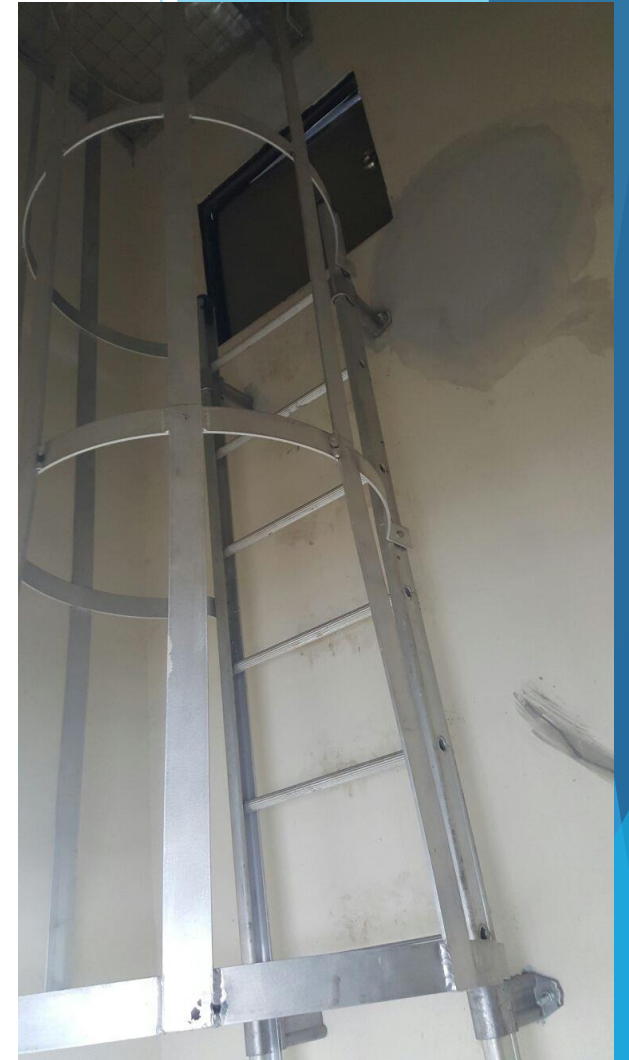
PROJECT NAME: SUTD SPORTS COMPLEX
MAIN CONTRACTOR: SINGAPORE PILING & CIVIL ENGINEERING PTE LTD



PROJECT NAME: WHITEHAVEN CONDOMINIUM
MAIN CONTRACTOR: RICH-LINK CONSTRUCTION PTE LTD



PROJECT NAME: TUAS DEPOT C1685
MAIN CONTRACTOR: JURONG PRIMEWIDE PTE LTD



PROJECT NAME: WAREHOUSE @ 5B TOH GUAN ROAD EAST
MAIN CONTRACTOR: LUM CHANG BUILDING CONTRACTORS PTE LTD



PROJECT NAME: ARCHIPELAGO CONDOMINIUM
MAIN CONTRACTOR: TIONG SENG CONTRACTORS PTE LTD



PROJECT NAME: INTEGRATED CONSTRUCTION AND FABRICATION HUB (ICPH)
MAIN CONTRACTOR: STRAITS CONSTRUCTION PTE LTD



Project Reference:

S/No.	Project Name	Main-Contractor	Scope of Work	Contract Value (SGD)	Completion
2012					
1	Turf City	SH Design & Build Pte Ltd	Steel Structure / Metal Works / Glazing Works / Cladding Works	600,000	2012
2	51 Jln Jendela	Chuan Oh Construction Pte Ltd	Steel Structure / Metal Works / Glazing Works	100,000	2012
3	Punggol West C27	Qingjian Int'l (South Pacific) Group Development Co Pte Ltd	Steel Structure / Metal Works	722,000	2012
2013					
1	The Minton	Qingjian Int'l (South Pacific) Group Development Co Pte Ltd	Aluminium, Grille, Dome	8,000,000	2013
2	Kung Chong Road	Lum Chang Building Contractors Pte Ltd	Steel Structure / Metal Works	170,000	2013
3	Punggol West C14	B-Construction Pte Ltd	Steel / Metal Works, Aluminium Cladding Works.	970,000	2013
4	Paya Lebar C1	B-Construction Pte Ltd	Steel / Metal Works	160,000	2013
5	BBC	SH Design & Construction	Aluminium & Glazing Works, Curtan Wall, Panel Door, Glass Railing	1,450,000	2013
6	Prince Charles (Showflat)	Great Earth Construction	Steel Structure, Aluminium & Glazing Works	500,000	2013
2014					
1	CET @ Paya Lebar	Great Earth Construction	Steel / Metal Works, Stainless Steel Works	600,000	2014
2	Woodlands Showflat	Qingjian Group Co Ltd Singapore Branch	Steel / Metal Works	215,000	2014
3	Sengkang Showflat	Qingjian Group Co Ltd Singapore Branch	Steel / Metal Works	330,000	2014

S/No.	Project Name	Main-Contractor	Scope of Work	Contract Value (SGD)	Completion
2015					
1	CST3B	Singapore Piling & Civil Engineering Pte Ltd	Steel / Metal Works/Railing	1,150,000	2015
2	SUTD	Singapore Piling & Civil Engineering Pte Ltd	Aluminium and Steel Works	2,900,000	2015
3	DBSS at Yuan Ching	Straits Construction Co Pte Ltd	Steel / Metal Works/Railing	500,000	2015
4	Singapore Polytechnic W4W5	Libra Building Construction Pte Ltd	Aluminium & Steel Work	359,500	2015
5	NTU (Novena & Yunnan Campus)	Great Earth Construction	Aluminium ,Glazing & Metal Work	327,000	2015
6	2M2P @ Science Park Drive	Lum Chang Building Contractors Pte Ltd	Steel Structure / Metal Works	1,300,000	2015
7	Ripple Bay@Pasir Ris	Lum Chang Building Contractors Pte Ltd	Aluminium Screen/Trellis & Glass Canopy	1,600,000	2015
8	Seletar Park Residence	Rich-Link Construction Pte Ltd	Aluminium and Steel	500,000	2015
9	Sennett Residence	Rich-Link Construction Pte Ltd	Aluminium and Steel	17,945	2015



List of Project Reference:

S/No.	Project Name	Main-Contractor	Scope of Work	Contract Value (SGD)	Completion
1	HDB Woodlands N7C34	Stallion Development	Aluminium Perforated Panels	\$ 22,000.00	2016
2	Lakelife EC @ Yuan Ching Road	Wee Poh Construction	Misc Aluminium Works	\$ 290,000.00	2016
3	HDB Bukit Batok N2C22	Ho Lee Construction	Misc Aluminium Works	\$ 135,000.00	2016
4	Archipelago Condominium	Tiong Seng Contractors	Misc Aluminium Works	\$ 35,000.00	2016
5	Integrated Construction and Prefabrication Hub @ Kaki Bukit	Straits Construction	Steel and Metal Works	\$ 265,000.00	2016
6	JTC @ Gul Circle	LBD Engineering	Misc Aluminium Works	\$ 40,000.00	2017
7	Pasir Ris Hawker Center	LBD Engineering	Aluminium / Steel and Metal Works	\$ 1,200,000.00	2017
8	Jurong West Hawker Center	LBD Engineering	Misc Aluminium Works	\$ 50,000.00	2017
9	HDB Punggol West C32 & Serangoon North C18	Ho Lee Construction	Aluminium and Stainless Steel Works	\$ 176,000.00	2017
10	CCK Cemetry	Toh Kim Bock C-E Contractors	Misc Aluminium Works	\$ 30,000.00	2017
11	Kallang Riverside Condominium	Rich-Link Construction	Aluminium and Misc Metal Works	\$ 830,000.00	On-Going
12	HDB Bedok N3C20	China Construction	Misc Aluminium Works	\$ 540,000.00	On-Going
13	Sol Acres EC @ CCK	Tiong Seng Contractors	Misc Aluminium Works	\$ 140,000.00	2017
14	Factory @ Tuas West Drive	Tiong Seng Contractors	Aluminium and Glazing Works	\$ 252,000.00	2017
15	HDB Hougang N9C16,17,19	Expand Construction	Misc Aluminium Works	\$ 350,000.00	2017
16	Sophia Hills Condominium @ Mt Sophia Road	Straits Construction	Misc Steel and Metal Works	\$ 595,000.00	On-Going
17	Trilive Condominium	Rich-Link Construction	Misc Stainless Steel Works	\$ 110,000.00	2017
18	JTC Space @ Tuas	Tiong Seng Contractors	Misc Aluminium Works	\$ 837,000.00	2017
19	JTC @ Buroh Lane	HPC Builders	Aluminium and Glazing Works	\$ 138,000.00	On-Going
20	Advance Package for Mandai	Pal-Link Construction	Misc Steel and Metal Works	\$ 40,000.00	On-Going
21	Substation @ Bayfront Ave	Expand Construction	Aluminium Louvres and Doors	\$ 130,000.00	2018



List of Project Reference:

S/No.	Project Name	Main-Contractor	Scope of Work	Contract Value (SGD)	Completion
22	Mandai Camp 2	CHL Construction Pte Ltd	Aluminium Cladding and Panels	\$ 245,000.00	On-Going
23	Jurong Island Checkpoint	Suncity Contracts Pte Ltd	Aluminium Windows and Glazing	\$ 76,500.00	2018
24	Marsiling Yew Tee Town Council Linkways	Chuang Wei Construction Pte Ltd	Structural Steel and Roofing	\$ 175,000.00	2018

